

Residents

A COMMUNITY- AND
NATURE-FIRST
ALTERNATIVE PLAN FOR
THE AREA

Charter

FOR THAMES VIEW & BARKING RIVERSIDE

WHAT

A resident Charter is a document that outlines the commitments and resources we want to see provided by those responsible for land development and housing infrastructure. Our charter has 10 asks outlines the local community's rights and priorities—based on over 3,000 conversations—with the aim of enhancing **participation, transparency, and accountability.**



WHY

Empowerment and Engagement
Transparency and Accountability
Clear Expectations
Sustainable Development
Improved Services and Support

THE WILL OF THE PEOPLE WILL PREVAIL



- History of Barking Riverside
Analysis of the area
- Narratives
- Our agenda
- Charter calls
- Key Findings
- Engagements
- Charter Responses
- RISE UP
- Conclusion

An illustration on the right side of the page shows two stylized figures. The top figure, with orange skin and black hair, is holding a grey megaphone to their mouth. The bottom figure, with yellow skin and black hair, is holding a large grey sign. The background is split into a light green upper half and a teal lower half.

Table of Contents

HISTORY

Timeline of the area from 1920's to 2020's



**BARKING POWER STATION STARTED
OPERATING FOR COMMERCIAL
PURPOSES ON JANUARY 1, 1926**



**1953,AN ENTIRE VILLAGE WAS DESTROYED BY
THE FLOODS - THE VILLAGE OF CREEKMOUTH
IN BARKING.**



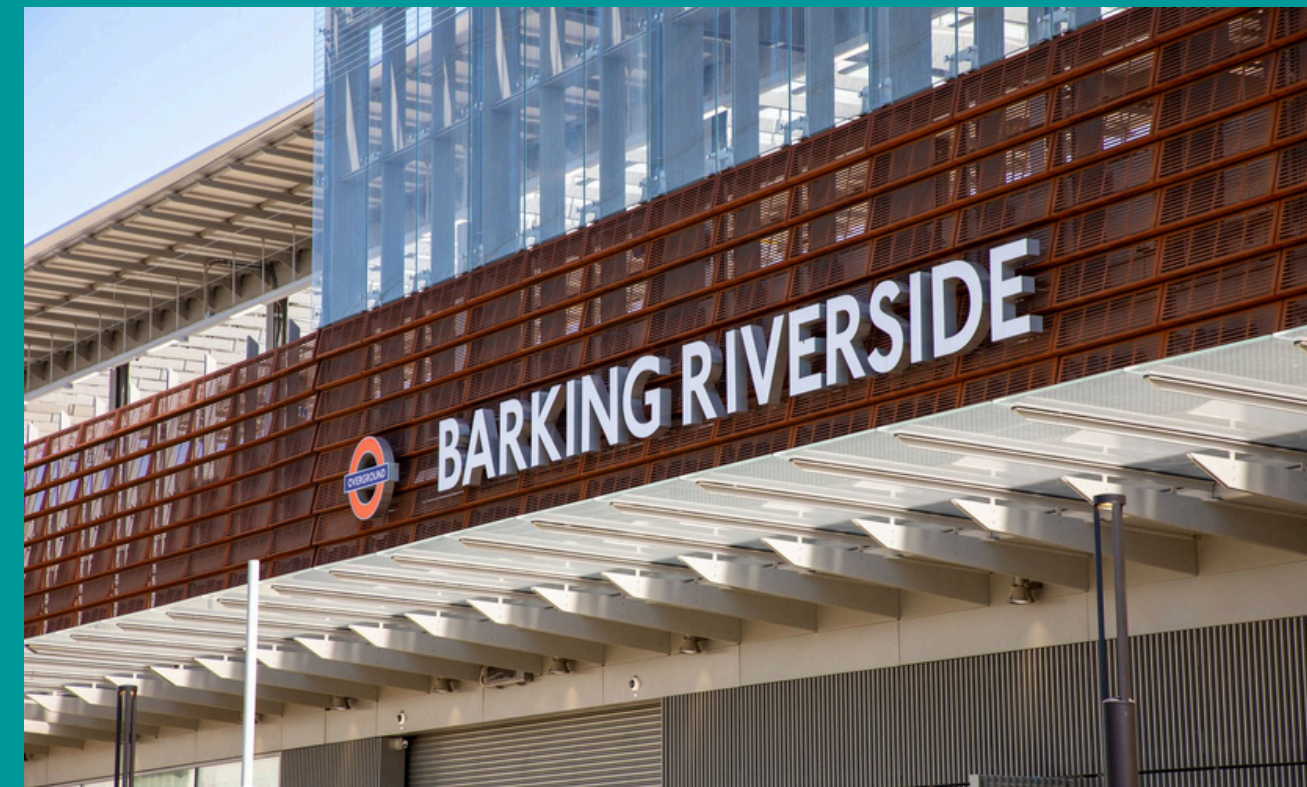
**BARKING BYPASS, A KEY SECTION OF THE A13, OPENED IN 1958.THE WARDS
WERE JUST MARSHY LANDS**



**THE BARKING POWER STATION,
A SERIES OF THREE COAL-
FIRED POWER STATIONS, WAS
CLOSED ON OCTOBER 26, 1981
AND SUBSEQUENTLY
DEMOLISHED**

HISTORY

Timeline of the area from 1920's to 2020's



THE LATER GAS-FIRED POWER STATION (ORIGINALLY KNOWN AS BARKING REACH POWER STATION) WAS BUILT FURTHER DOWN THE THAMES NEAR DAGENHAM DOCK IN THE EARLY 1990S. THE PRESENCE OF FUEL ASH DEPOSITS ACROSS THE SITE IS A DOCUMENTED FACT (SOURCE: GROUND ENGINEERING WEBSITE)

BARKING RIVERSIDE OVERGROUND STATION OPENED UP MID 2022 PAVING THE WAY FOR MORE DEVELOPMENTS.

Duncan Bowie

Industry expert in housing and planning

- 80's– Head of housing policy for Newham
- 90's– Ran the **government housing programme in London.**
- 00's– Worked for **London Councils & City Hall** for Ken Livingston as Mayor leading on housing policy in the London Plan
- 2007 – Worked on Barking Riverside Masterplan

Analysis

HE IS AN INDUSTRY EXPERT ON PLANNING, HOUSING AND REGENERATION AND HE WORKS CLOSELY WITH THE BARTLETT SCHOOL OF PLANNING, UNIVERSITY COLLEGE LONDON AND JUST SPACE. THE VIEWS HE EXPRESSED WHILE SPEAKING AT THE THAMES LIFE RESIDENTS' PLANNING FORUM WERE GIVEN IN A PERSONAL CAPACITY.





Duncan Bowie

At Residents Planning Forum in August 2024, he spoke regarding the viability of making huge developments at the site

“I was involved in the original discussions with Bellway in Barking and Dagenham during 2005, 2006 and 2007, when I worked for (Ken) Livingston. That’s when the initial planning consent was granted for a development of 10,822 homes—some of which, of course, have since been built. You can see how little attention was given to key issues: housing types and density, who would actually live there, whether it would be private or social housing—and not to mention questions about who would work in the industry and the impact of industrial displacement.”

**DUNCAN BOWIE
QUOTES
TAKEN FROM
THE THAMES
LIFE RESIDENTS'
FORUM
MEETING,
AUGUST 2024**

“My own view of the site by Bellway originally was that it should be much more low and medium rise dwelling and looking at home ownership lower down the housing market in a way that might actually be affordable for some of the people of Barking & Dagenham. Whether that is going to be the case with the new development is highly questionable.”

“What you’ve seen in recent years is real problems with a lot of flats development, some of it is flats as small units, some of it is very high rise indeed and also with the issues of cladding and service charges. There have been real problems with people stuck in a totally inappropriate housing which they can’t insure or maintain properly.”

“The ... problem I always had with Barking Riverside from the original proposition was that there was never really much of a focus on what kind of social facilities you would actually provide... The whole idea of a neighbourhood planning approach really was never there in the original discussions. I think the aspirations they had of the original area were not just unrealistic but not actually allowing for the kind of development that was needed for existing residents of Barking but also for the wider need for more social rented housing for lower economic households, and also for houses at the bottom of the housing market.”

**DUNCAN BOWIE
QUOTES
TAKEN FROM
THE THAMES
LIFE RESIDENTS'
FORUM
MEETING,
AUGUST 2024**

“Barking and Dagenham houses fulfil a useful role... it is the cheapest place to buy a house in London and we could have built new housing, lower density housing, three bed housing with gardens on Barking Riverside in a way that was actually affordable by middle income groups from a much wider area which was part of the original discussion and why it was seen as such a significant development.”

“ I was really puzzled by the assumptions of the original proposal nearly twenty years ago which was predicated at what at that time was relatively high density based on the cross rail going to Barking Riverside which of course never happened and the Gospel Oak line going to Barking which doesn't really do the business from that point of view. I never really understood how it was going to be attractive to that kind of market that the developer was aiming at. It was all linked to the discussion in East London which Newham led on and Barking followed which was that we need to move our areas up market, we've got too many poor people and we need to attract investment and we need to attract a new kind of resident. You can understand the logic of that. One wonders to what extent that is in the interests of those existing residents who have families and who also need housing relatively near to where they live.”

Dr Pablo Sendra



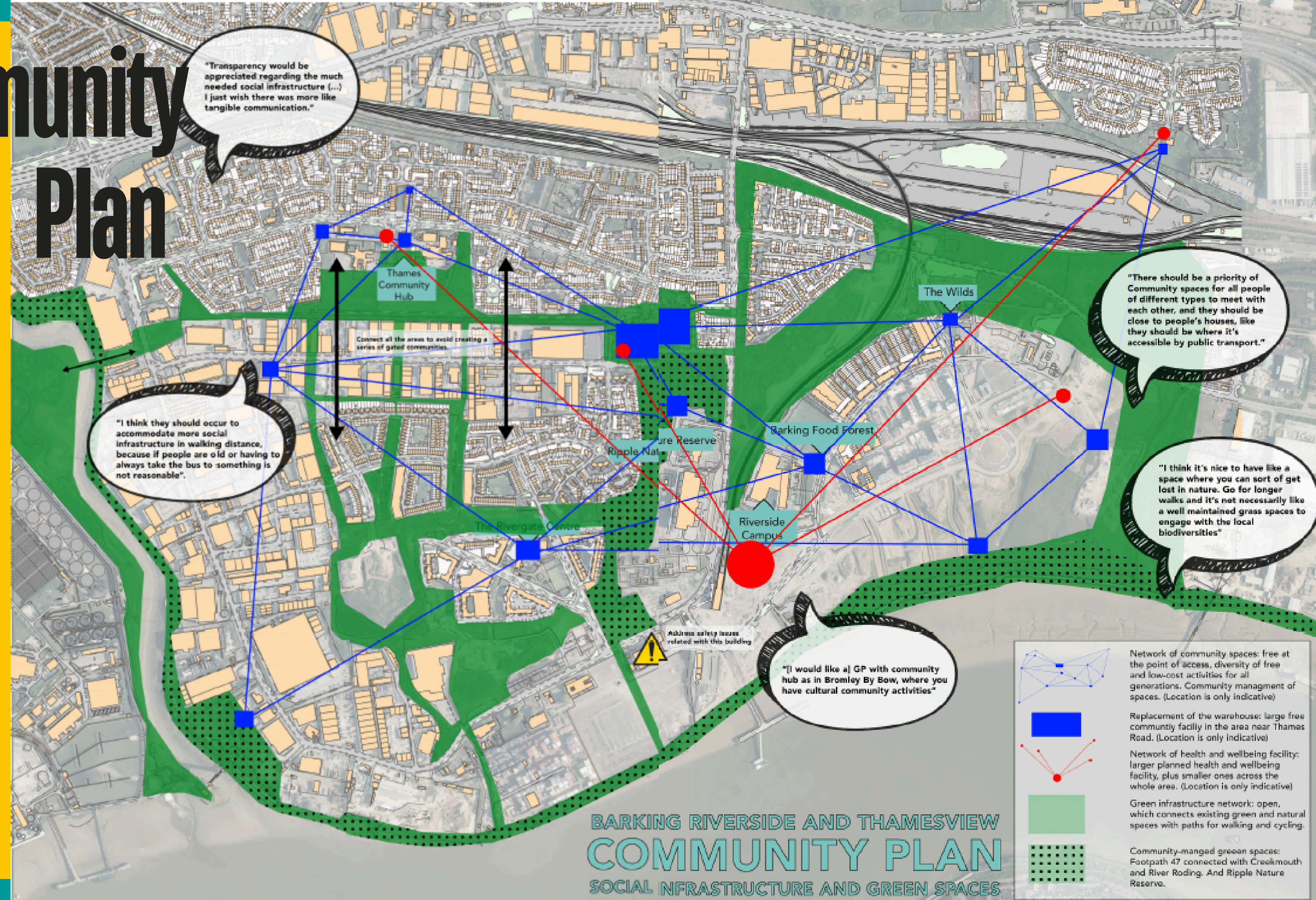
Analysis

An architect, urban designer, writer, researcher and educator. He is an Associate Professor at The Bartlett School of Planning, UCL. He is also director of LUGADERO LTD, an urban design practice that focuses on facilitating co-design processes with communities.

Working with local residents as well as Thames Life and Just Space, he co-designed a vision for social infrastructure and services—focusing on community spaces, health facilities, and green and natural areas—for the neighbourhood.



Community Plan



METHODOLOGY

Participatory Action Research
methodological approach, according to the sociologist Orlando Fals-Borda, that consists of creating partnerships with those that are being researched and treating them as co-researchers

DO YOU HAVE IDEAS FOR GREEN SPACES IN BARKING RIVERSIDE AND THAMES VIEW? Come to our Co-Design Workshop

Wednesday 14th February 2024
6PM – 7:30PM

Curzón Community Center
Bastable Avenue, Barking. IG11 0LH

Thames Life and UCL are collaborating on a research project to co-design a community vision for social infrastructure for Barking Riverside and Thames View.

Join us and your neighbours of Thames View and Barking Riverside to give your feedback and vision on matters such as community facilities, green spaces, and the environment. Together we will create a community-led vision for social infrastructure that can be presented to key stakeholders and work towards improving our neighbourhood. To get started, please complete the boxes overleaf and bring it to our first workshop on the 16th of January at 6pm-7:30pm at the Thames Community Hub.



For more information about the project, please scan this QR code link

Thames
Life

UCL

What spaces do you value most in Barking Riverside and Thames View?

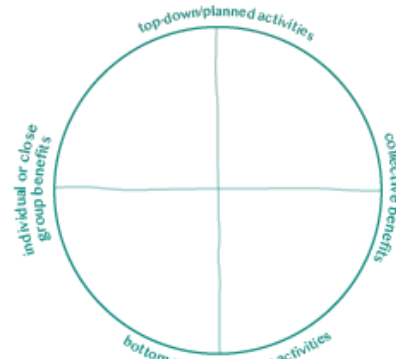
What are your key priorities for green and community spaces?

Please only fill this form if you are over 18 and live or work within or near Barking Riverside and Thames View wards.

Two large empty rectangular boxes for residents to write their responses to the questions above.

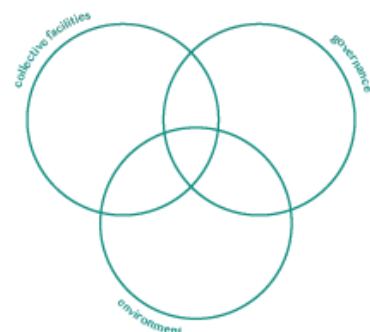
If you submit your card, your input will be included as part of the workshop results – and might be quoted anonymously – in the UCL research project “Co-designing social infrastructure in new developments: Barking Riverside” (UCL Ethics ID 9089/006). Please read the information included in this flyer. If you have any question about the project, please email pablo.sendra@ucl.ac.uk.

What spaces do you value the most in Barking Riverside and Thames View?



What are your key priorities for green and community spaces?

What needs to be done to achieve these priorities, concerning the following categories?



co-designing social infrastructure

postcard
of future place

Health Facility

what are the key services and benefits of this space?

...what health services does it provide? what health professionals does it include?
...how does it contribute to the residents' health and wellbeing?

who are the key users of this space?

...who would use this space and why? what health issues do they have?
...who would benefit from this facility?
...how old are the people using this space?

what are the key features of this facility?

...how would you describe the space? what does it look like?
...what kind of facilities does it have?
...does it have both an indoor and outdoor space?

Barking Riverside
& Thames View

Thames
Life

UCL

co-designing social infrastructure

postcard
of future place

Community Facility

what are the key activities and benefits of this space?

...what do you do when you come here?
...what benefits does it bring to the community?

who are the key users of this space?

...who would use this space (local? visitors?) and why?
...how old are the people using this space?
...who do you meet when you go there?

what are the key features of this facility?

...how would you describe the space? what does it look like?
...what kind of facilities does it have?
...does it have both an indoor and outdoor space?

Barking Riverside
& Thames View

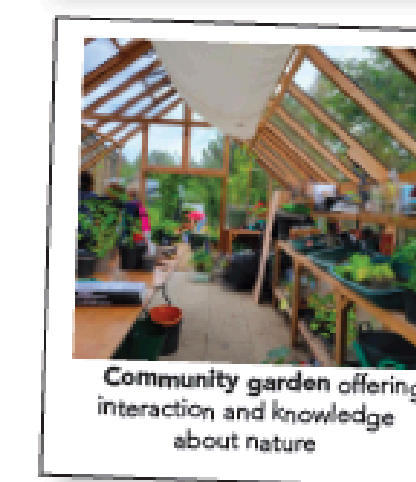
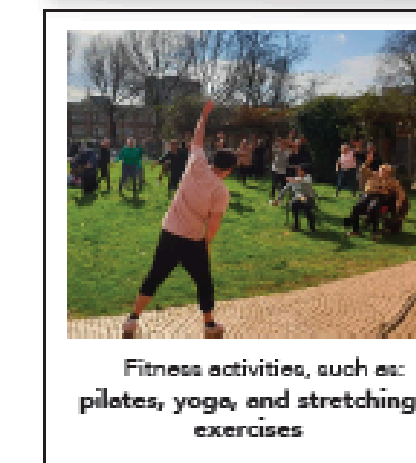
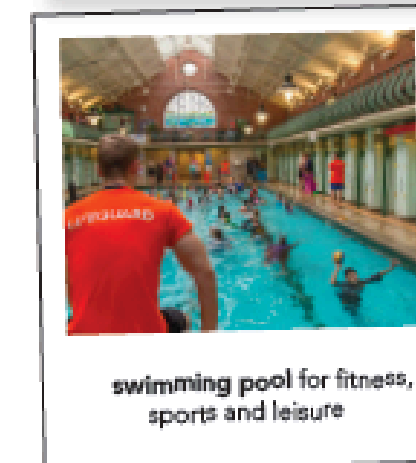
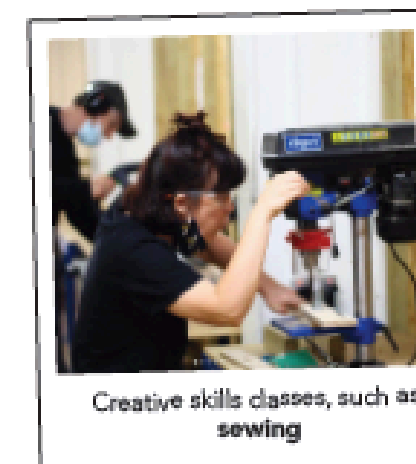
Thames
Life

UCL

Figure 3.1 Back of the postcard where residents could imagine a future place.



Figure 3.2: Polaroids available to help residents imagining a future place and creating their own collage of activities and services on the other side of the postcard (continues in the following page).



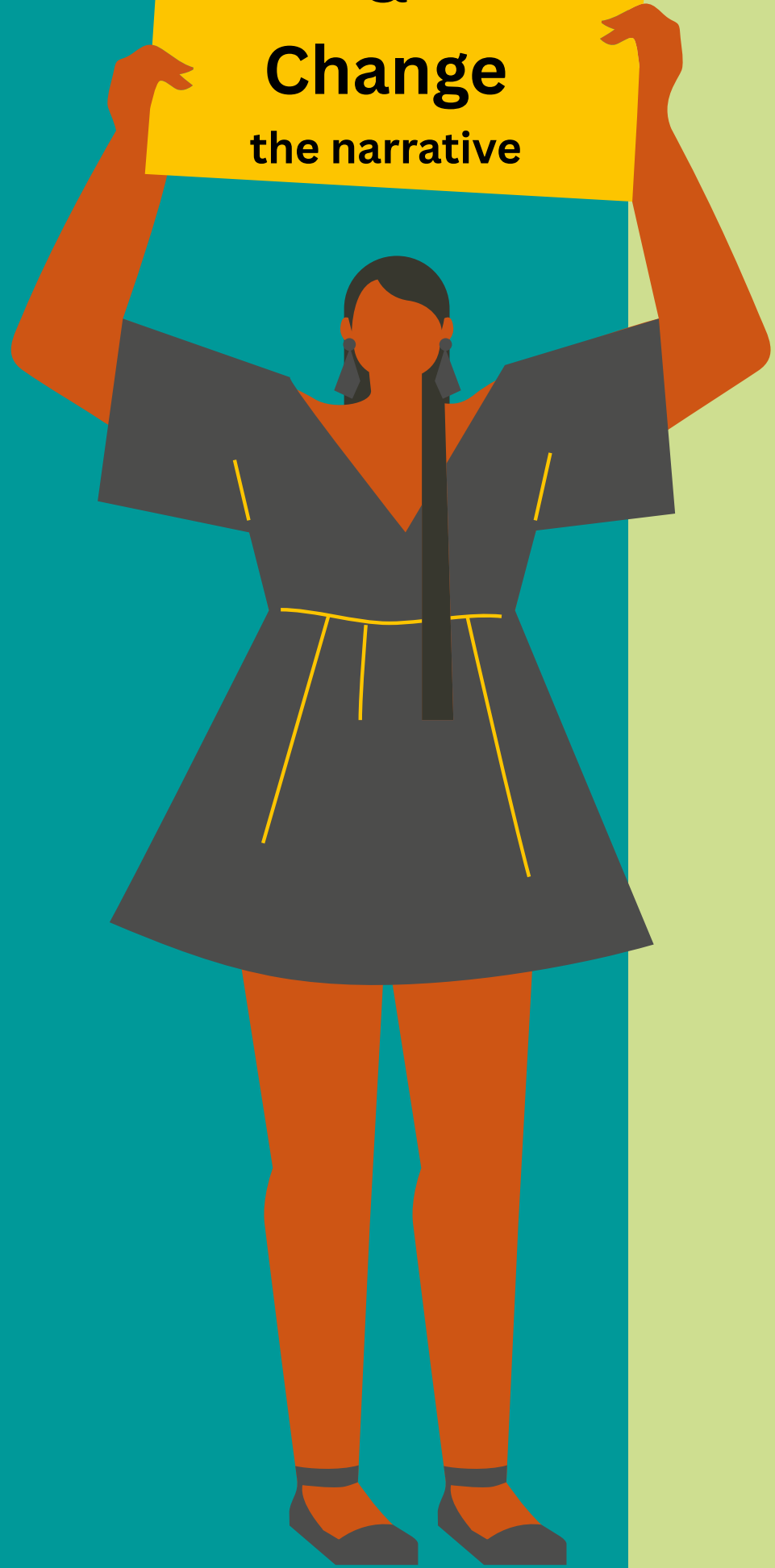
POWER OF STORIES & WHO TELLS THEM



SUGGESTION, PERCEPTION AND
NARRATIVE



**Challenge
&
Change**
the narrative



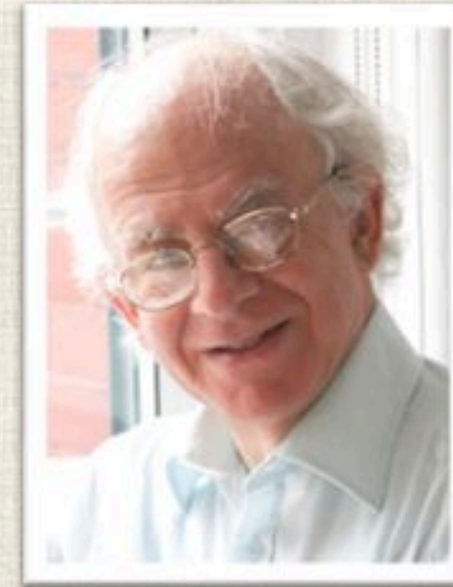
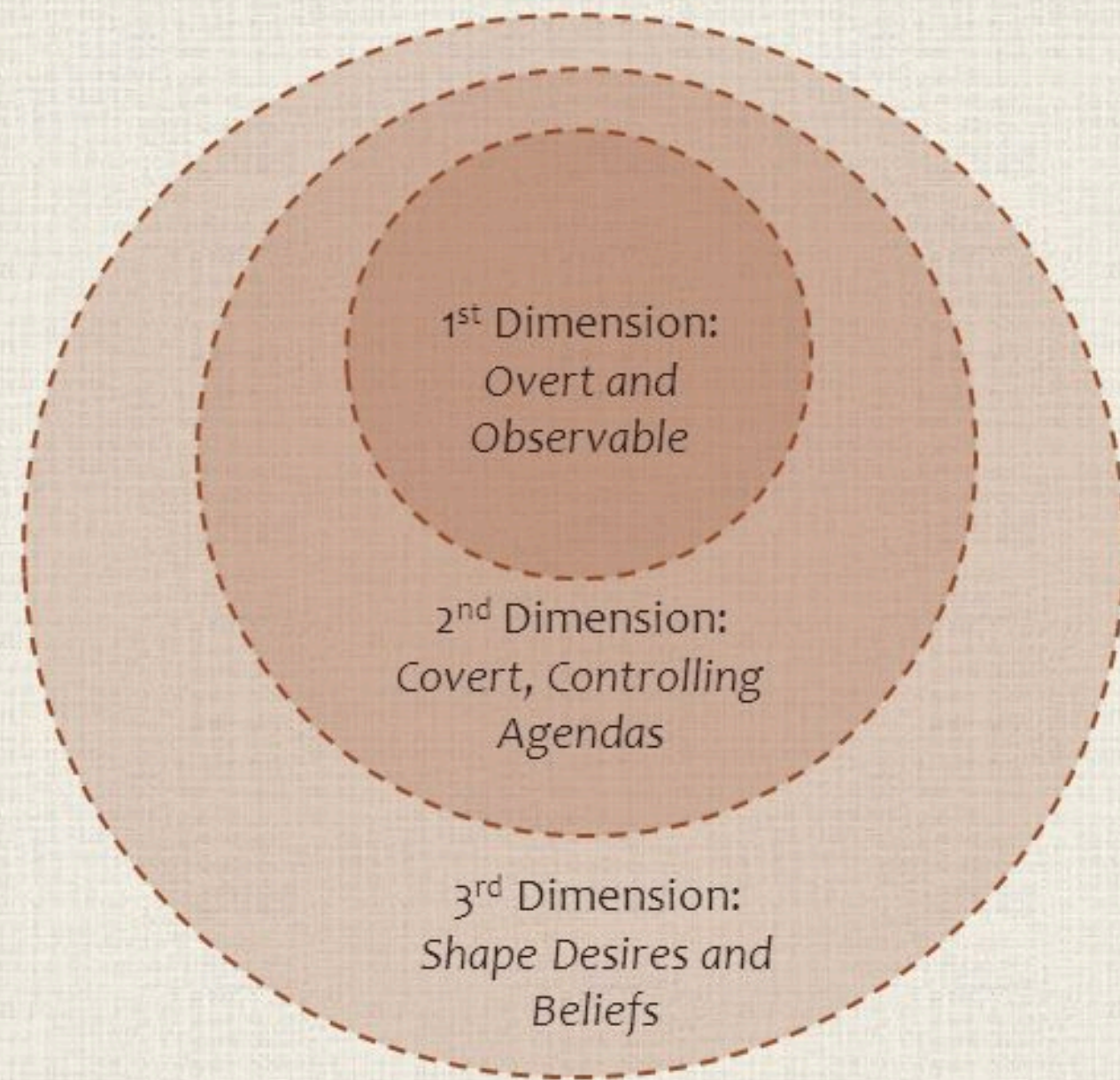
Our place as a community development
hub is to....



Provide
Clarity & Comfort



Deeper Dimensions of Power



Prof. Steven
Lukes
New York
University

The Radical
View of
Power.

Lukes, S., 2005. Power: A Radical View 2nd ed., Palgrave Macmillan

Our agenda

Power is not only about making decisions but also about shaping the context in which those decisions are made.

This framework, when used ethically, serves as a powerful mechanism for advancing societal progress and addressing pressing challenges.

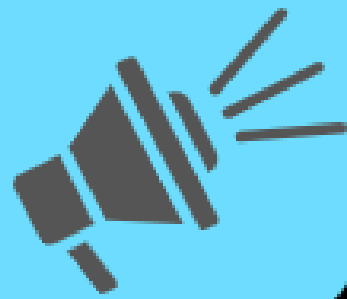
1. POWER SHAPES WHAT WE THINK IS ACCEPTABLE, INFLUENCING OUR PERCEPTIONS.

2. CULTURAL DOMINANCE EMBEDS RULING-CLASS NORMS INTO EVERYDAY INSTITUTIONS AND VALUES.

3. HIDDEN IDEOLOGIES MAKE ALTERNATIVES SEEM IMPOSSIBLE—RECOGNIZING THEM ENABLES TRANSFORMATION.







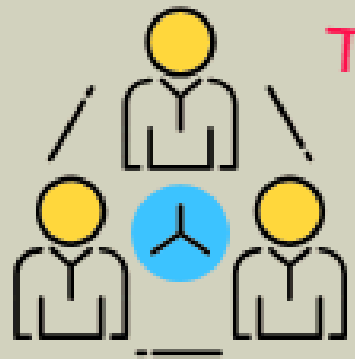
Health Centre Now!

We demand a fully equipped health centre and dental care facilities.



Protection and Preservation Green Spaces

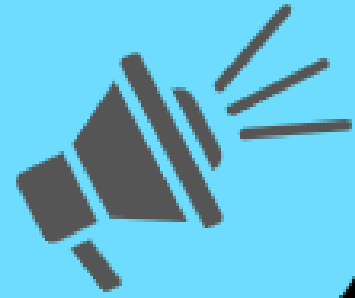
Green spaces are essential for wellbeing and sustainability. Footpath 47 must be preserved in its original form as closely as possible.
The Ripple Nature Reserve must be reopened and fully maintained.



Transparency in Finances and Board Meetings

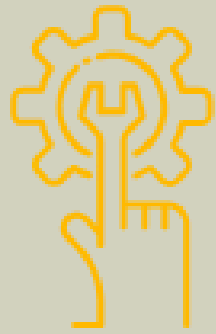
We call for full transparency on how money is spent on all areas of development and open board meetings so residents can have a say in the decisions that affect them.





Free Community Buildings and Spaces

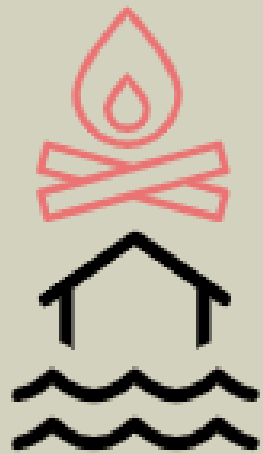
Community spaces should be free for local people, community groups and faith groups and accessible to all.



Housing Management Overhaul

Housing to be well-maintained, safe, and affordable.

Issues like repairs, service charges, and management failures to be addressed urgently.



Safety First - Tackle Incinerators, Flooding & Fire Risks

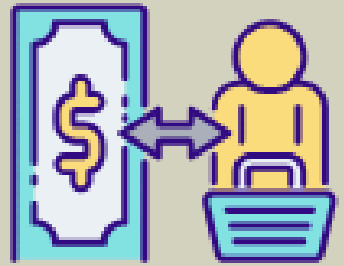
Action needed to reduce environmental hazards, improve flood protection, and ensure all buildings are fully fire proof.





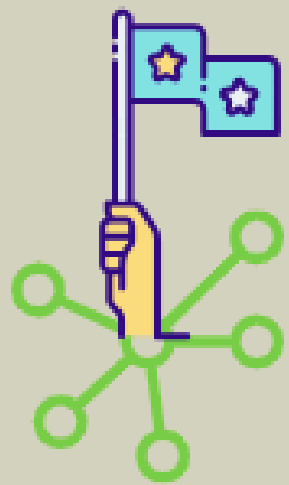
Lower Density; 10,822 Homes → Review response → assess → adjust

High-density housing should be limited. A review to take place after 10,822 homes to fully assess the impact before any further expansion



Local Jobs & Business Space

Investment to prioritise employment opportunities for local people and provide space for small businesses to thrive



Independent Community Engagement

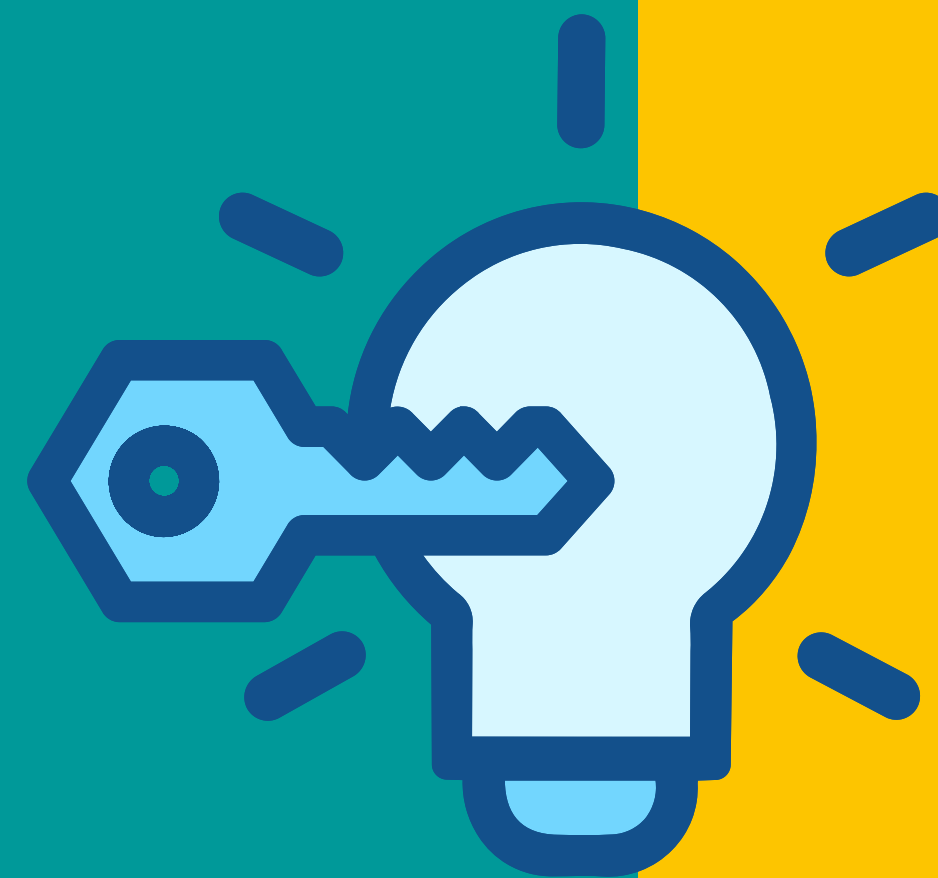
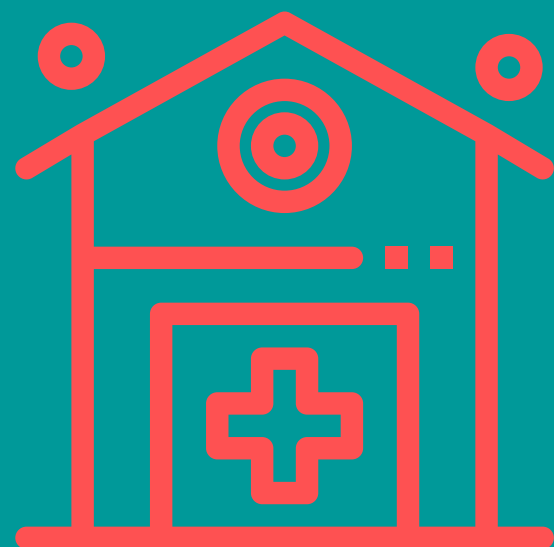
Community consultation must be run independently of the developer and any group created by them, to ensure fairness and genuine resident involvement.



RESIDENTS PERCEIVE A LACK OF HEALTH FACILITIES:

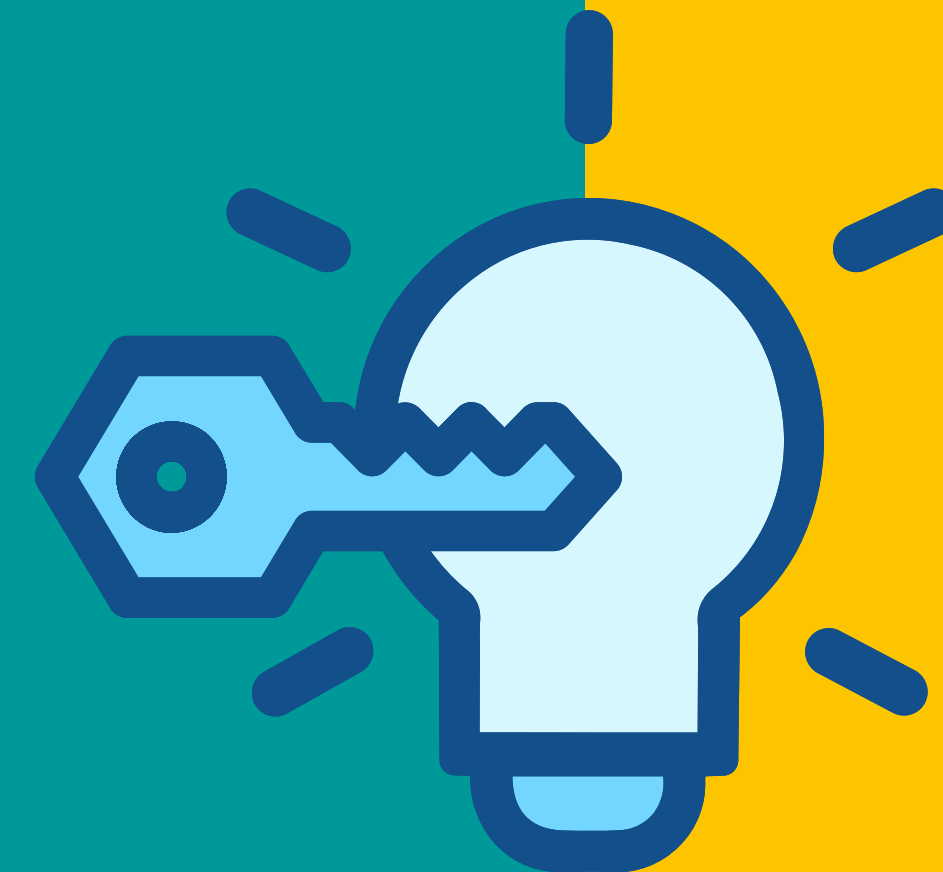
There is only one health centre to cover both Thames View and Barking Riverside wards (including Scrattons Farm). While there is a planned health facility in the scheme, this has not been delivered yet due to complications with funding and delivering a large development that includes both health and leisure services. Residents perceive that one single health centre does not have sufficient capacity to cover various areas. Thames

Life and Aurora Medcare (funded by Barking Riverside Limited and the London Borough of Barking and Dagenham) have been delivering monthly drop-in clinics to provide health and wellbeing services to residents without booking an appointment.



IMPACT OF THE CLOSURE OF EVERYONE-EVERYDAY WAREHOUSE:

Since the Warehouse closed in summer 2023, this has left an important gap in the provision of community spaces. This led to the loss of free and low-cost activities for the community, and a loss of free spaces for people to gather.



NEW COMMUNITY SPACES DO NOT RESPOND RESIDENTS' DEMANDS:

The Barking Riverside development has provided two new community spaces. However, this does not meet the demand of residents. These community facilities generally do not provide free spaces for people to socialise and have informal gatherings, but they are mainly for paid activities.

GREEN SPACES AND ACCESSIBILITY:

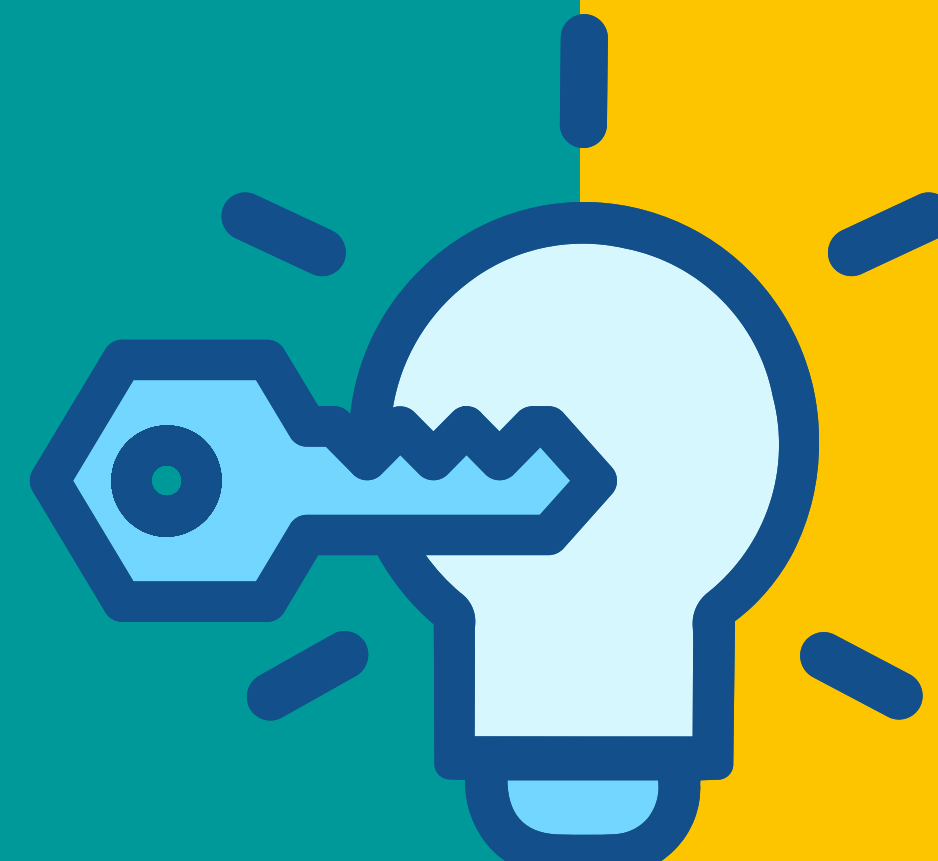
Residents value natural or "untouched" green spaces, but currently they are not accessible to the public. These include spaces such as Ripple Nature Reserve and Creekmouth open space. Residents want to keep Footpath 47 (the riverside walk) as a natural space with appropriate signage and facilities to appreciate nature such as bird watching.

PARTICIPATION AND TRANSPARENCY:

Lack of community participation for such a large scheme. There is no co-production of proposals and residents do not feel they can influence decision-making. In terms of transparency, residents need to be informed on how profit from new developments result in more social infrastructure and community benefits being delivered. This needs to be done in an accessible way.



**Lack of
Communication
& Accessibility**



Social consequences of higher and hyper density

- Too few family sized homes being built
- Negative impact on affordability: higher density; higher land prices of new homes
- Flats not Houses
- Service Charges and the cladding
- Collapsing market for flats





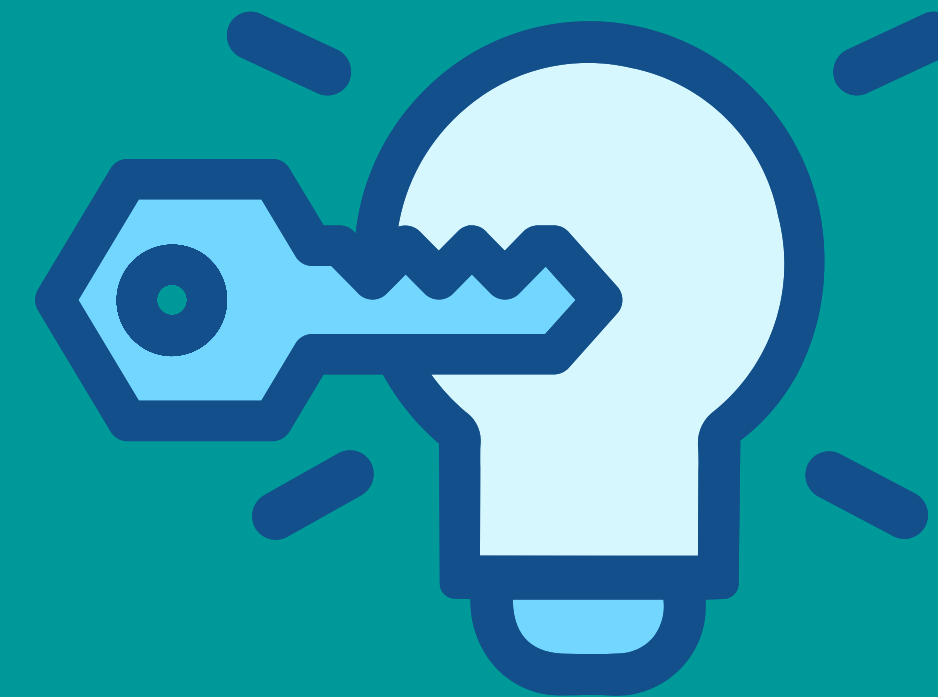
thameslifecd
Curzon Community Centre



thameslifecd 🌱 The Ripple Effect Meeting – Air Quality Meets Community Power

One of the Ripple Effect gathering was buzzing (in a clean-air sort of way)! We had the honour of welcoming Dr. Kayla Schulte from Imperial College London, who helped demystify what's floating in the Barking breeze. With the help of four community-run sensors, we're not just collecting data – we're building stories out of it. Stories that will feed into a community map, helping us make better decisions and spotlight the unsung air-heroes of Barking. Even more exciting? We're talking about formalising local ambassadors to lead the charge. The future's not just bright – it's breathable.

Air Quality in the area is compromised!
More reasons for community led green spaces!



K
E
Y
F
I
N
D
I
N
G
S



RESPONSE TO THE CALLS

Based on discussions with residents
and industry experts



WE ARE SOLUTION ORIENTED. FOR THE RESPONSES
WE DID THE FOLLOWING....

1. **ASSESS**, IN COLLABORATION WITH RESIDENTS AND COMMUNITY GROUPS, THE EXISTING SOCIAL INFRASTRUCTURE IN THE AREA.
2. **CO-DESIGN** WITH RESIDENTS AND GROUPS A COMMUNITY-LED VISION FOR SOCIAL INFRASTRUCTURE IN THE AREA, WITH A PARTICULAR FOCUS ON COMMUNITY SPACES, HEALTH FACILITIES, AND GREEN SPACES.
3. **FACILITATE A KNOWLEDGE EXCHANGE** THROUGH WHICH COMMUNITY MEMBERS INVOLVED FEEL MORE EMPOWERED TO PARTICIPATE IN DECISION-MAKING AND CONNECTING THIS EXPERIENCE TO OTHERS.



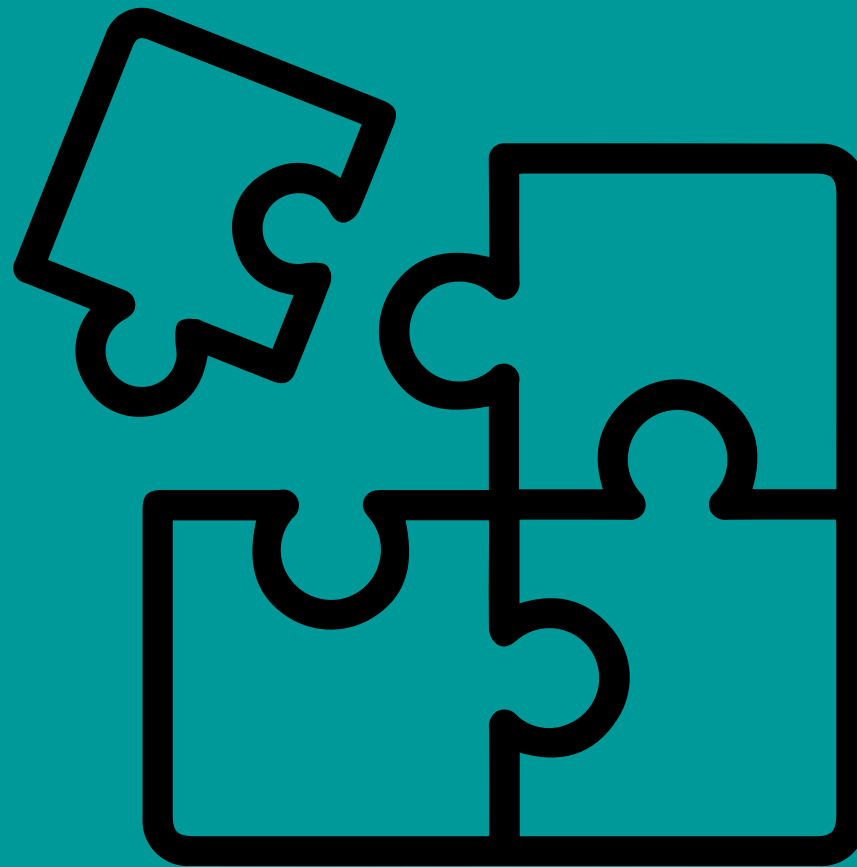
Born out of years of listening, surveying, and community conversations with over 3,000 residents, the Charter brings forward pressing concerns about green space access, the lack of a health centre, and the pressures of a growing population.

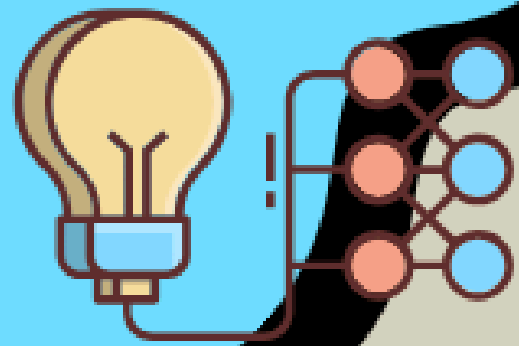
Group	Number of residents	Running total
4 growth summits	400	400
Architecture sans Frontières workshops	100	500
Riverside School assemblies and Young Citizen Action Group listening campaigns	1,500	2,000
Thames View Summer Fayres x2	200	2,200
Health events with BD Health Watch and Thames Life	200	2,400
Thames Life GP drop-ins	100	2,500
British Red Cross workshops	100	2,600
Ripple Nature Reserve Resident Steering Group	50	2,650
Ripple Effect – Warehouse, Thames View and Riverside	250	2,900
Resident Planning Forum	100	3,000
Barking Food Forest	100	3,100
Sports Programmes – BS4C, Laureus	100	3,200

THE PROJECT HAS ENGAGED WITH LOCAL GROUPS, ATTENDING REGULARLY MEETINGS SUCH AS THE RESIDENT PLANNING FORUM HOSTED BY THAMES LIFE, THE RIPPLE EFFECT CAMPAIGN MEETINGS, AS WELL AS MEETINGS OF RESIDENTS ASSOCIATIONS IN THE AREA. ALSO LONDON-WIDE NETWORK OF COMMUNITY ORGANISATIONS LIKE CITIZENS UK, JUST SPACE WAS INVOLVED IN MAKING OF THE COMMUNITY PLAN OF THE AREA.



**It's a community vision that can continue the
dialogue between communities,
developers and the public authorities involved in
Barking Riverside and Thames View wards.
Let's look into some practical solutions.**





Some practical and people centric solutions to the urgent issues via effective campaigning & communications



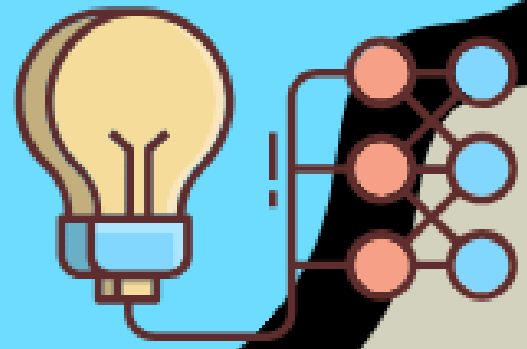
Forming Community Land Trusts

Residents to have control over land and housing through community land trusts, ensuring long-term affordability and sustainability

Responses >



Guerrilla Gardening is a movement that takes unused or neglected private property and brings it back to the masses in an attempt to beautify and repurpose every square inch, while often incorporating fresh produce sources to those in need.

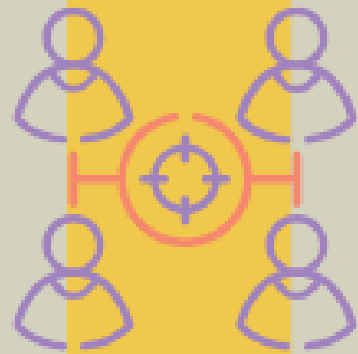


Some practical and people centric solutions to the urgent issues via effective campaigning & communications



"Save green spaces for better mental health campaign".

Community gardening and clean up projects with case studies of before and after



Live Streaming of Board Meetings.

Publishing of financial reports in layman terms on a regular basis.

Q&A sessions with stakeholders and collaborators in a well planned 'Community Day' event

HOLISTIC HEALTH, CARE AND WELLBEING: BUILD AN INNOVATIVE AND HOLISTIC HEALTH, CARE AND WELLBEING INFRASTRUCTURE, WHICH PROVIDES DIFFERENT KINDS OF SERVICES, SUCH AS SOCIAL PRESCRIBING, PRIMARY, ELDERLY AND PALLIATIVE CARE, NUTRITION, DENTISTS, PHYSIOTHERAPY, MENTAL HEALTH AND WELLBEING.

NETWORK OF HEALTHCARE AND WELLBEING FACILITIES: ALTHOUGH BARKING RIVERSIDE MASTERPLAN IS PLANNING HEALTH FACILITY NEXT TO THE OVERGROUND STATION, THIS SHOULD NOT BE THE ONLY NEW HEALTH FACILITY. THERE SHOULD BE A NETWORK OF HEALTH PROVISION THAT SPREADS ACROSS ALL THE AREA.

PRIORITISE THE DELIVERY OF HEALTH INFRASTRUCTURE IN THE DELIVERY SCHEDULE OF THE MASTERPLAN.



Responses >

RE-PROVIDE A COMMUNITY FACILITY IN THE AREA OF THAMES ROAD THAT FILLS THAT GAP LEFT BY THE CLOSURE OF THE WAREHOUSE: IF RE-OPENING THE WAREHOUSE IS NOT POSSIBLE, THIS COMMUNITY FACILITY SHOULD BE RE-PROVIDED IN THE PROXIMITY. IT SHOULD INCLUDE FREE SPACES FOR PEOPLE TO GATHER INFORMALLY, FREE AND LOW-COST ACTIVITIES, MAKERSPACES, EQUIPMENT, AND SPACES FOR THE CREATIVE EXPRESSION OF LOCAL RESIDENTS. THIS SHOULD ADOPT A BUSINESS MODEL THAT MAKES IT ECONOMICALLY SUSTAINABLE BUT LEAVES SPACES FOR FREE ACTIVITIES AND SPACES TO SOCIALISE (E.G. MIXING RENTED SPACES WITH FREE SPACES).

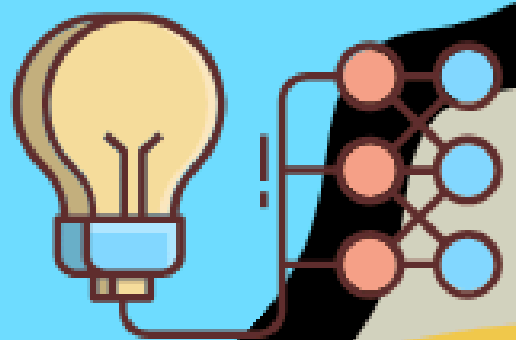
Responses >



Responses >

- **PROVIDE A NETWORK OF COMMUNITY FACILITIES FOR ALL GENERATIONS:** BUILD A NETWORK OF COMMUNITY FACILITIES ACROSS ALL THE AREA, WHICH PROVIDES ACTIVITIES FOR YOUNG PEOPLE SUCH AS SPORTS, MAKERSPACES AND ENTERTAINMENT, ACTIVITIES FOR THE ELDERLY, MULTIGENERATIONAL ACTIVITIES SUCH A COMMUNITY GARDENING, AND LEARNING AND UPSKILLING OPPORTUNITIES. DIVERSITY OF FREE AND LOW-COST SPORTS FACILITIES, INCLUDING SWIMMING POOL.
- **MANAGEMENT OF COMMUNITY SPACES:** INVOLVE LOCAL COMMUNITY ORGANISATIONS ON THE MANAGEMENT OF COMMUNITY FACILITIES, SO THEY CAN ENSURE FREE AND LOW-COST ACCESS TO SPACES AND ACTIVITIES. AVOID THE MODEL OF A PROPERTY MANAGEMENT COMPANY RUNNING COMMUNITY SPACES.
- **ENGAGE WITH FAITH GROUPS TO ENSURE THAT THE FAITH SPACE PROVISION MEETS THEIR DEMANDS.**

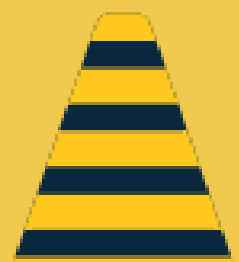




Some practical and people centric solutions to the urgent issues via effective campaigning & communications



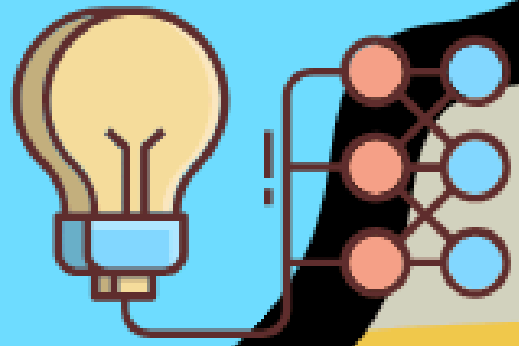
Shape a co-designed policy proposal by getting feedback from residents regarding their housing concerns. Prior training given to residents to understand housing management process and including a housing expert. Using resident testimonials and surveys to pitch this policy to council and housing developer.



Annual health and safety days with workshops on topics such as fire safety, mental health, emergency preparedness
Community safety audits, where residents walk through the area to identify safety concerns (e.g., broken streetlights, poor lighting in public spaces) and propose solutions.



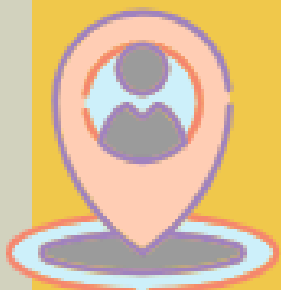
Responses >



Some practical and people centric solutions to the urgent issues via effective campaigning & communications



Provide residents with information to explain how lower-density housing benefits the community, the environment, and the economy so they engage the authorities to review and assess the situation after building of 10822 houses.



Organize a local job fair or community event that connects residents with employers in the area. Include workshops on job search skills, resume writing, and interview tips.

Campaign to create incentives for local businesses to hire residents, including tax breaks or training programs for local workers.

Advocate for and organize skills development programs, such as workshops or partnerships with local colleges, that provide residents with the tools they need for local employment.

- **NETWORK OF GREEN INFRASTRUCTURE:** PROVIDE A NETWORK OF GREEN INFRASTRUCTURE THAT CONNECTS THE EXISTING GREEN AND NATURAL SPACES WITH PATHS FOR WALKING, BIKE LANES, AND TREES.

- **FOOTPATH 47:** KEEPING FOOTPATH 47 AS A NATURAL ENVIRONMENT, ENSURING THE PRESERVATION OF WILDLIFE. PROVIDE SIGNAGE AND LOCAL WALK MAPS. PROVIDE INFRASTRUCTURE SUCH AS SEATING, PICNIC SPACES, BIRD HIDES. EXTEND TO CREEKMOUTH OPEN SPACE.

- **CREEKMOUTH OPEN SPACE :** MAKING IT OPEN TO THE PUBLIC AND CONNECTED TO FOOTPATH 47. PROVIDE A VISITOR CENTRE WITH SPACE FOR ECOLOGY WORKSHOPS, SPACES AND ACTIVITIES FOR CHILDREN AND YOUNG PEOPLE, AND ACTIVITIES SUCH AS COMMUNITY GARDENING. PROVIDE INFRASTRUCTURE SUCH AS MORE BINS, FLOWER BEDS, BIRD WATCHING AND A PIER. MAKE IT A SAFE PLACE.

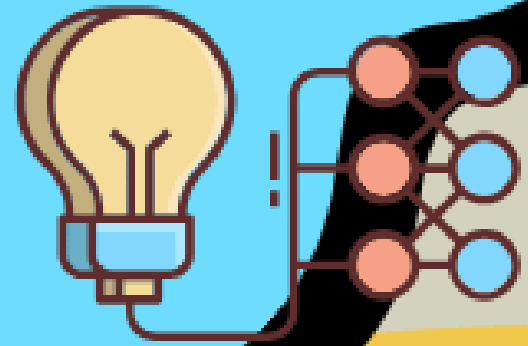
- **RIPPLE NATURE RESERVE:** MAKE IT OPEN TO THE PUBLIC AND ACCESSIBLE, AND MANAGED BY THE COMMUNITY. PRESERVE AS AN UNTOUCHED NATURAL SPACE WITH HIKING TRAILS AND NATURE WALKS.

RESTORE EXISTING INFRASTRUCTURE SUCH AS THE PERISCOPE, AND PROVIDE NEW INFRASTRUCTURE SUCH AS A VISITOR CENTRE, A CAFE, PICNIC AREA AND SIGNAGE WITH ANIMALS AND VEGETATION SPECIES.

- **INVOLVE COMMUNITY ORGANISATIONS IN THE MANAGEMENT OF GREEN SPACES.**



Responses >

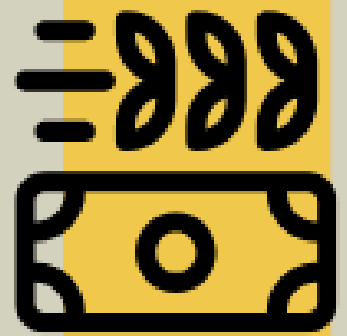


Some practical and people centric solutions to the urgent issues via effective campaigning & communications



Genuinely connecting with residents so they are able to open up properly and then asking for short and succinct videos on their issues and putting it in a nice reel kind of format to share in board meetings.

Responses >



Make a Community Pot with micro donations donated monthly by residents and businesses. The collective support will empower local projects that enhance the shared spaces and services.

COORDINATION BETWEEN BARKING RIVERSIDE LIMITED AND THE LOCAL AUTHORITY, AND THE GREATER LONDON AUTHORITY IN THE DELIVERY OF COMMUNITY NEEDS: SINCE THERE ARE TWO MAIN DEVELOPMENTS PLANNED (BARKING RIVERSIDE AND THAMES ROAD), THEY NEED TO BE CONSIDERED JOINTLY TO MEET THE DEMANDS OF THE COMMUNITY.

- TRANSPARENCY AND ACCESSIBLE MECHANISM TO COMMUNICATE THE SCHEME: PROVIDE REGULAR UPDATES TO INFORM RESIDENTS ON HOW THE PROFIT FROM THE DEVELOPMENT IS USED TO DELIVER SOCIAL INFRASTRUCTURE AND COMMUNITY BENEFITS. THIS COULD BE DONE IN A SIMILAR MANNER TON HOW HMRC EXPLAINS HOW TAXES ARE USED.**
- AN INCREASE ON NUMBER OF HOMES NEEDS TO BE REFLECTED ON AN INCREASE ON SOCIAL INFRASTRUCTURE AND HEALTH FACILITIES: A CONSULTATION ON AN INCREASE OF HOUSING NEEDS TO GO ALONG AN INCREASE IN COMMUNITY AND HEALTH INFRASTRUCTURE ASSOCIATED TO THIS.**

Responses >





ONE: Lack of social infrastructure: (community spaces)

TWO: Lack of financial transparency esp. when appealing to lack of money for social infrastructure.

THREE: land contamination, environmental impact, and lack of green spaces

FOUR: lack of health facilities

FIVE: housing management failure

SIX: increased housing density as a fait accomplissement

SEVEN: limited meaningful community engagement and decision-making

EIGHT: a wider culture of mistrust

NINE: a need to revisit fundamentals

WIN WIN

R
I
S
E
U
P

REGENERATION

IMAGINATION

SUCCESS

EVERYONE

UPLIFTING

PEOPLE



Conclusion

ENSURE RIGOROUS AND INDEPENDENT REVIEW PROCESS FOR THE SUBSEQUENT PHASES OF THE MASTERPLAN: GIVEN THE COMPLEXITY AND SIZE OF THIS SCHEME, COMMUNITY ENGAGEMENT NEEDS TO GO WAY BEYOND THE CONSULTATION MECHANISMS USED UNTIL NOW.





the

end